



**CNBM**

# **CNBM Port**





## Company profile

CNBM International Engineering Co., Ltd is a member of CNBM Group. CNBM Port is specialized in offering clients solution for port cargo handling. As a reliable partner, our expertise and knowledge will help minimize cost and maximize value.

Our diverse portfolio encompasses consultancy, design, manufacturing, equipment delivery, site installation, commissioning, training, and spare parts supply from single equipment to terminal turnkey project.

Our service is featured by providing clients tailor-made design, full set financing package, port operation management research and consultation, cargo handling technology and related equipments, electromechanical and automatic control system, equipments maintenance and services.

CNBM Port is dedicated to providing the domestic and overseas clients the well-rounded solution and professional services.

CNBM Port offers its high-efficiency and reliable solution for port cargo handling.

Within CNBM Port, our experts harbour the knowledge and experience that is indispensable in the development of modern ports and are dedicated to finding solutions aimed at improving (un)loading, transport, storage systems and optimising clients business activities in the field of port cargo handling, processing, and storage.

## Scope of business

- Container
- Bulk cargo
- Port crane
- Consultation and training
- Port design and planning
- Turnkey plants

## Products



### ● Container

#### ◆ Dock container crane



#### ◆ Rubber-tyre mounted Container Gantry Crane (RTG)



Lift capacity(under spreader): 35t  
 Elevation height(above ground): 15.6m  
 (stockpile 4 layer pass 5 layer)



◆ **Rail-mounted container gantry crane (RMG)**

Using area: for container stockyard and terminal.



Lift capacity (under spreader): 40.5t

Elevation height (on ground): 21m (stockpile 6 layer pass 7 layer)

◆ **Container straddle carrier**

Using area: Stevedoring 20 and 40 ft standard container from quayside to yard work area



◆ **Reach stacker**



◆ **Towing tractor**



## ● Bulk cargo

### ◆ Ship loader/unloader



Ship loader for coal



Ship unloader



1000tph movable stone ship loader



400t/h movable grain unloader



Pneumatic ship unloader



screw unloader

### ◆ Grab unloader



## ● Port crane

### ◆ Portal crane

Portal crane is an all purpose crane which has large lifting capacity and wide working radius. It is widely used for loading and unloading containers, general cargos and break-bulk cargo in harbour and river port.



### ◆ Wheel crane

5-50t wheel crane is a self-propelled, full-circle slewing crane. This crane features high productivity, safe and reliable operation, easy maintenance and has been widely used for loading, unloading in harbour, station, plant, storage yard and construction site.



### ◆ Floating crane



Floating crane is mainly used for bulk cargo handling, general cargo with grab and hook, and also applied for containers. The structure adopts the full circle swinging single-arm, balance lever and amplitude of variation.



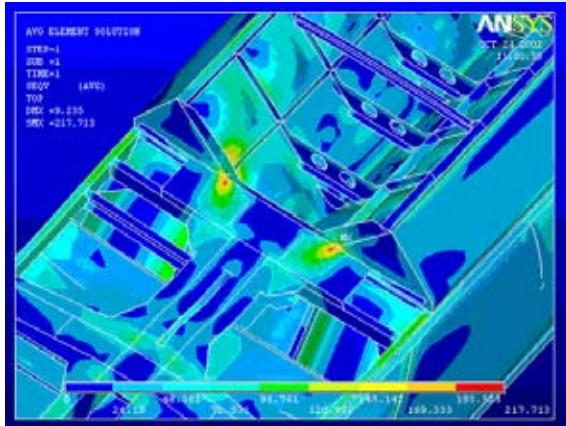
Mechanized comb-type slide control system for ship launching

40t friction winch in mechanized comb-type slide control system



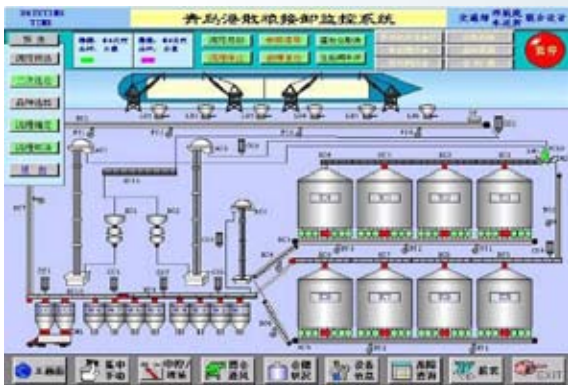
## ● Research consultancy & training

- ◆ Port Industry Development
- ◆ Electromechanical & Informational Technology
- ◆ Energy Saving & Environmental Protection



## ● Port design and planning

- ◆ Equipment design
- ◆ Electromechanical, automation and communication system design
- ◆ Management information system design
- ◆ Logistic management system design
- ◆ Construction design



Qingdao Port Bulk Grain Project Operation Screen



Operation Desk







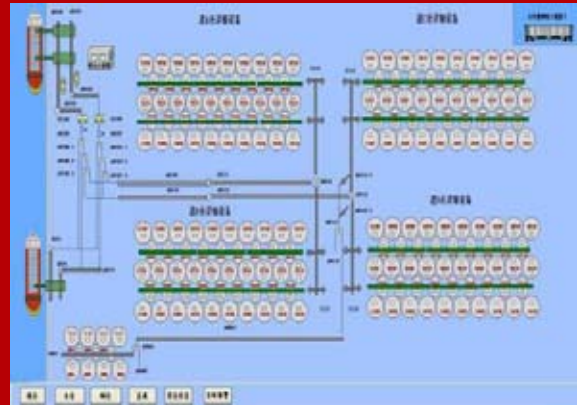
Qingdao port cement storage project



Tianjin coke terminal operation



Dalian Beiliang bulk Grain Storage project



Shanghai bulk grain terminal operation screen



Guangzhou xiji coal terminal operation screen



## ● Turnkey plants

- ◆ Container lifting process system
- ◆ Bulk commodity load/unload process system
- ◆ General cargo load/unload process system



Bulk cement terminal



Coal handling plants for power plants



Grain storage and conveying system





## Platform advantage

History: CNBM Port Engineering is based on the platform of CNBM Group, which was incorporated in 1984 upon the approval from the State Council and is a holding company.

As an EPC Contractor, we are proud of our engineering and construction experience worldwide. CNBM has established relationships with customers from more than 100 countries around the world. Overseas subsidiaries have been established to provide efficient and high quality services to customers.

Advantages: Business scale, resources, technology, integrated solution, investment and financing capability.



**CNBM**

**CNBM International Engineering Co., Ltd.**

19th Floor, Building 4, Interwest Business Centre, No.9, Shou Ti

South Road Haidian District, Beijing, 100048, China

Tel: 0086-10-68796868, Fax: 0086-10-68796029

Website: <http://www.cnbmengineering.com>

E-mail: [engineering@cbmie.com](mailto:engineering@cbmie.com)